

Driver Overview

Clyde Adams III

Semtech Corporation

cadams@semtech.com



Agenda

- Microsoft SMBus Driver
- Microsoft Battery Driver
- SBS-IF SMBus Driver
- SBS-IF SMBus Driver Fees
- SBS-IF Battery Driver
- Battery Stack
- SMBus Control Methods



Microsoft SMBus Driver

- Microsoft Smart Battery driver currently for Windows 2000 only (not 98 or Me)
- Windows 2000 battery driver has limits
 - Supports only EC, no chipsets
 - Supports only single SMBus segment



Microsoft Battery Driver

- Microsoft Smart Battery driver currently for Windows 2000 only (not 98 or Me)
- Windows 2000 battery driver has limits
 - Supports only Selector and not SBS Manager
 - SB data not directly available
 - No provisions for proprietary data composition



SBS-IF SMBus Driver

- Provided by the SBS-IF
- Single architecture for Windows 98 and Windows 2000
- IOCTL interface compatible with MS
- Supports Windows 2000 Battery stack
- HW agnostic - support EC and chipset host controllers
- Supports multiple SMBus segments
- SMBus 1.0 and 1.1 support



SBS-IF SMBus Driver Fees

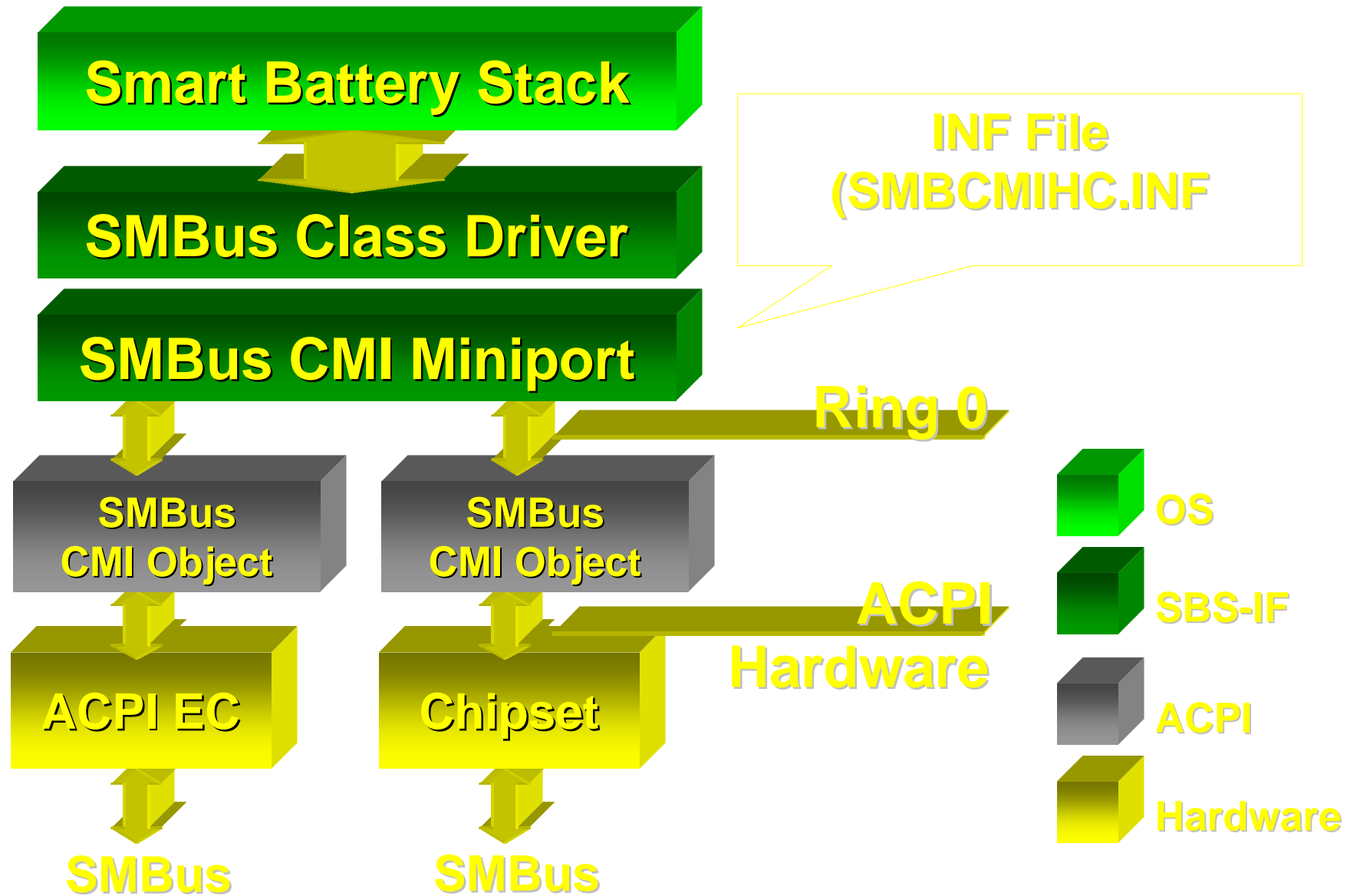
- One-time fee for OEM only, royalty-free
- For SBS-IF members:
 - Evaluation driver - free
 - Production driver - \$3000.00
- For non-members:
 - Evaluation driver - \$1000.00
 - Production driver - \$5500.00



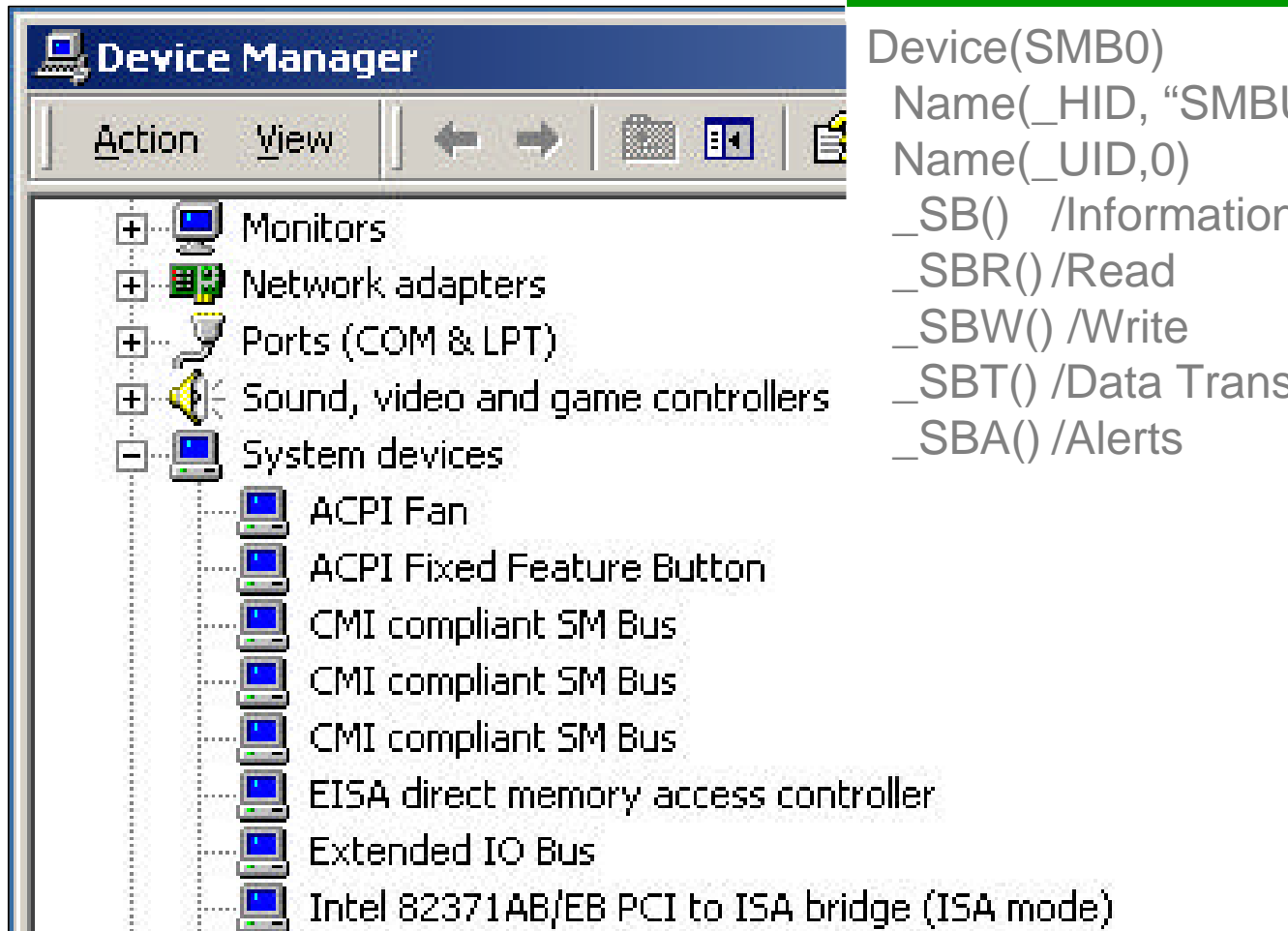
SBS-IF Battery Driver

- Exists only as an unpublished draft spec
- Single architecture for Windows 98 and Windows 2000
- IOCTL interface compatible with MS
- Supports Windows 2000 Battery stack
- Provides for composite battery data, direct data access, and proprietary data composition
- SBS 1.0 and 1.1 support
 - SB Manager supported
 - Simultaneous charge/discharge supported





SMBus CMI Object



```
Device(SMB0)
Name(_HID, "SMBUS01")
Name(_UID, 0)
_SB() /Information
_SBR() /Read
_SBW() /Write
_SBT() /Data Transfer
_SBA() /Alerts
```

